

HUDSON HIGHLANDS

PUTNAM

HISTORY

MUSEUM

WEST POINT FOUNDRY

*COLORING PAGES FOR
CHILDREN & ADULTS*

~

FEATURING LOCAL HISTORIC SCENES



AN ICE BOAT ALONG THE HUDSON RIVER IN COLD SPRING, 1893.





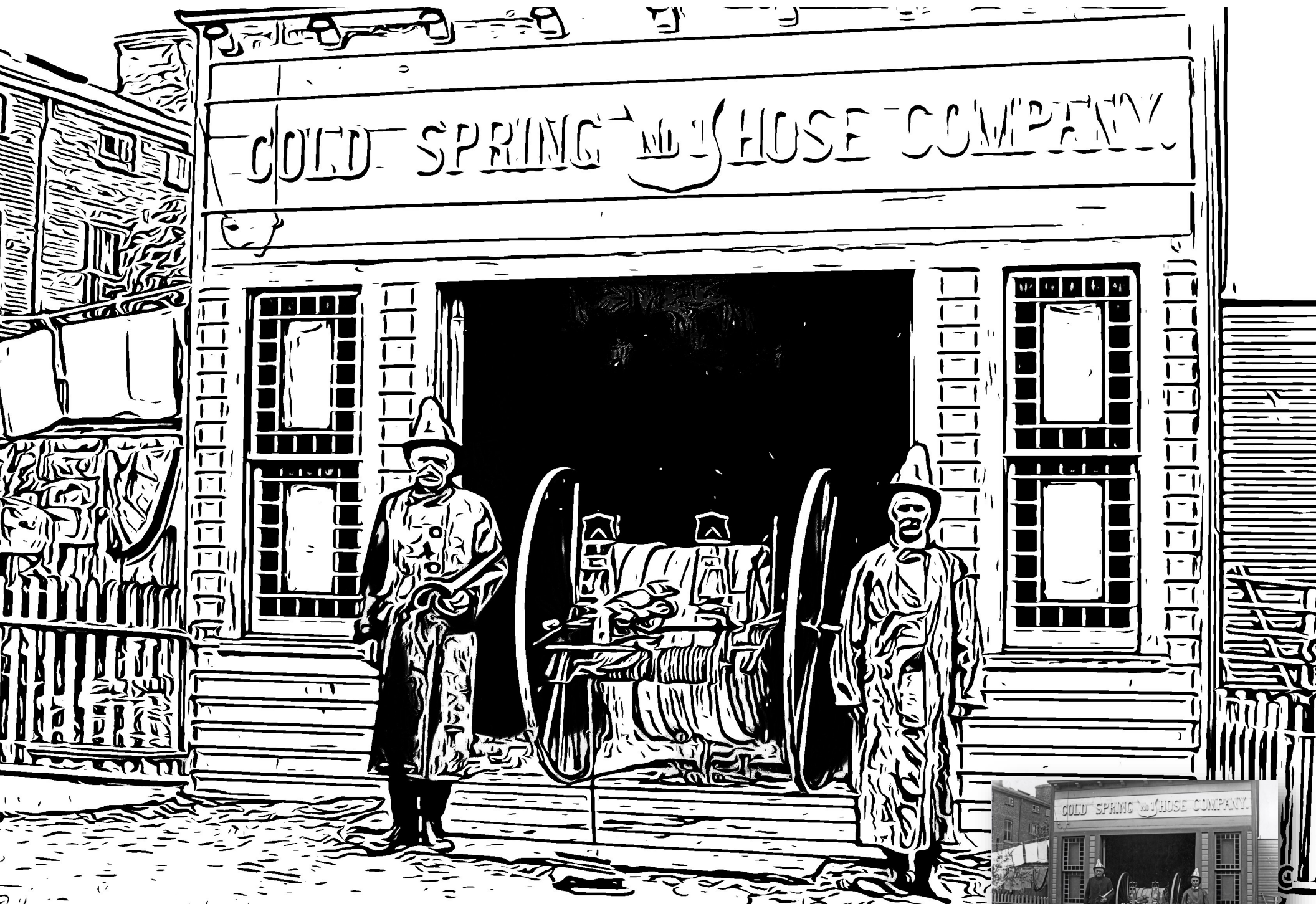
A SCHOONER WITH ITS TWO MASTS, AT ANCHOR OFF COLD SPRING, WITH CROW'S NEST AND STORM KING BEHIND, 1890.





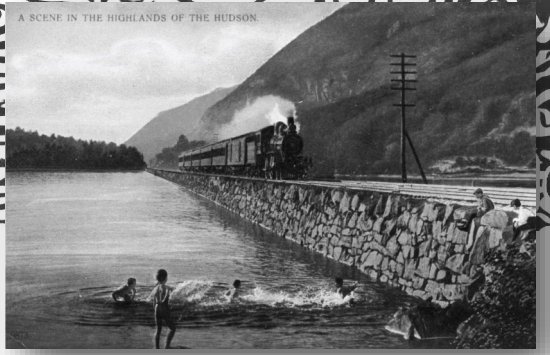
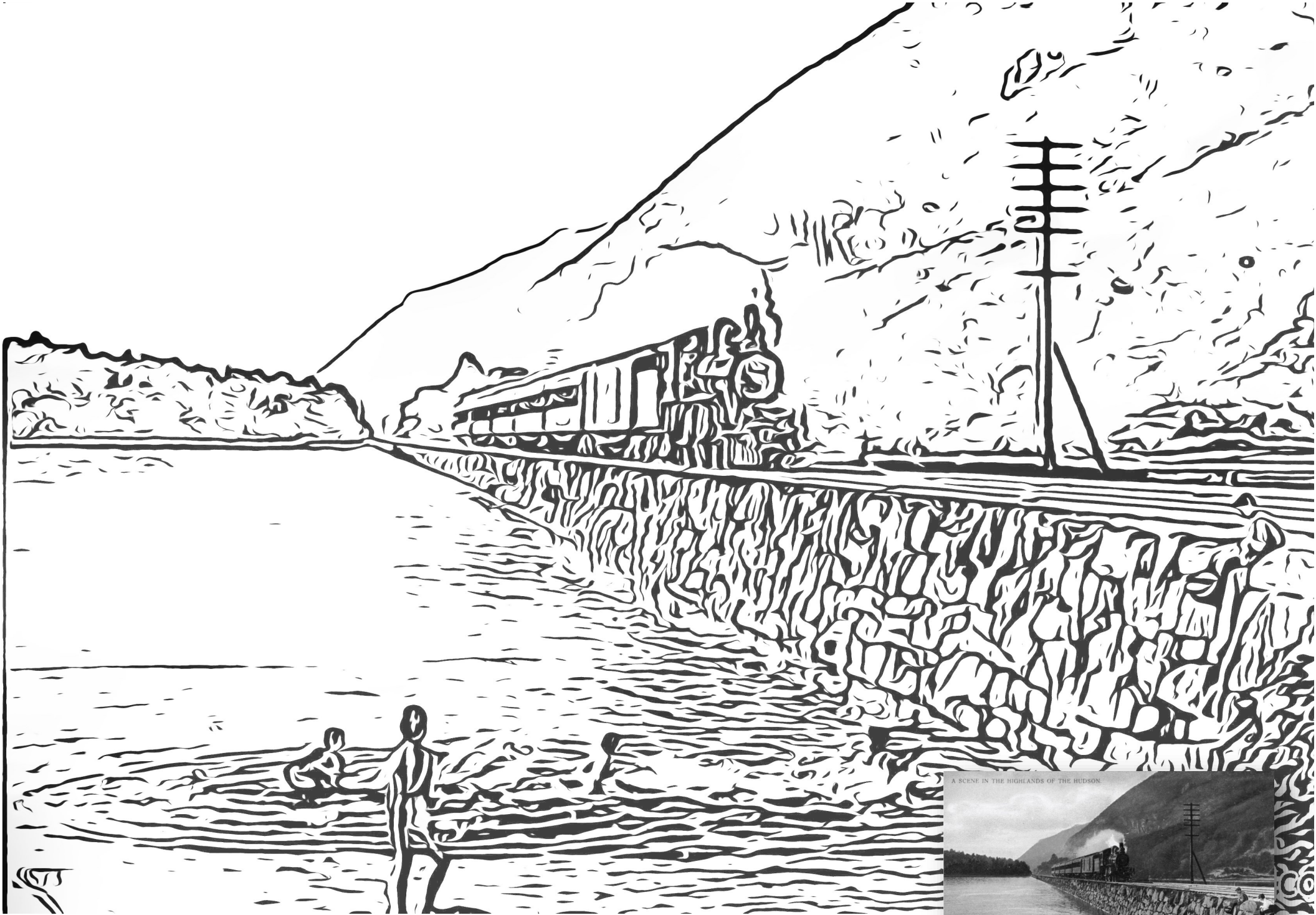
THREE MEN TALK ON THE MAIN COLD SPRING DOCK, 1895.



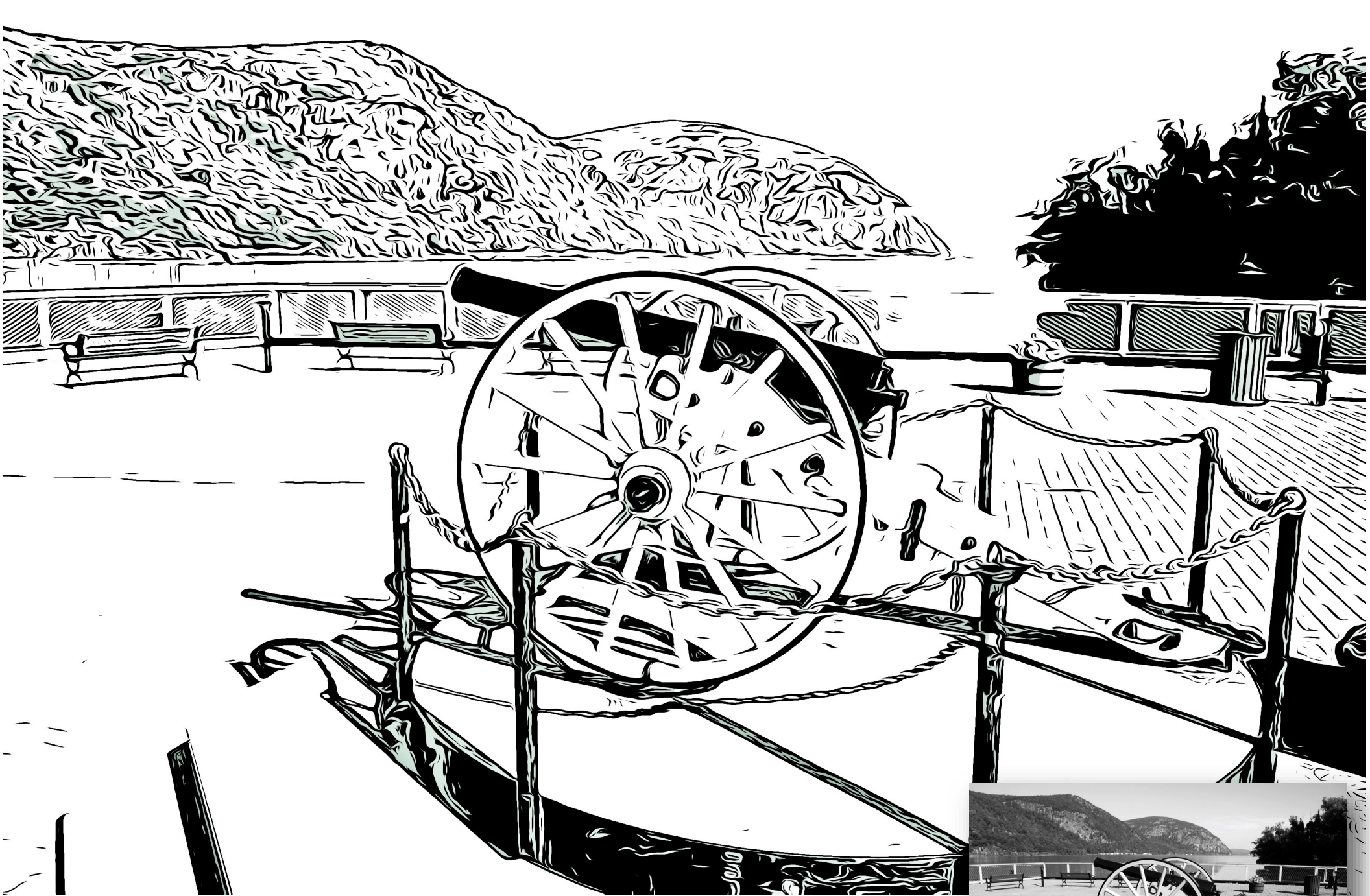


REPLACING THE OLD BUCKET BRIGADE, THE COLD SPRING HOSE COMPANY NO.1 ORGANIZED IN 1896. THEY MOVED INTO THEIR FIRST FIREHOUSE IN 1898.

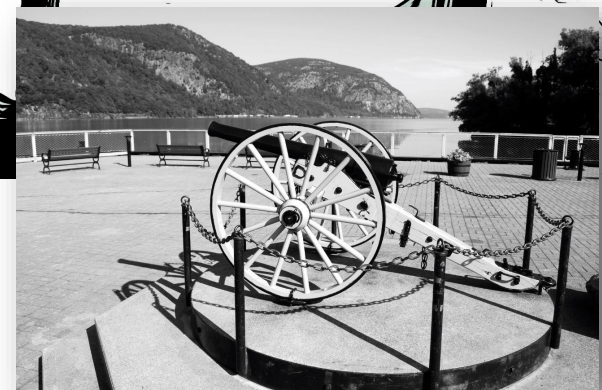




HISTORIC POSTCARD: A SCENE IN THE HIGHLANDS OF THE HUDSON



REPLICA OF A PARROTT GUN, NAMED AFTER ITS INVENTOR ROBERT PARKER PARROTT. PARROTT RAN COLD SPRING'S WEST POINT FOUNDRY FOR MANY YEARS.



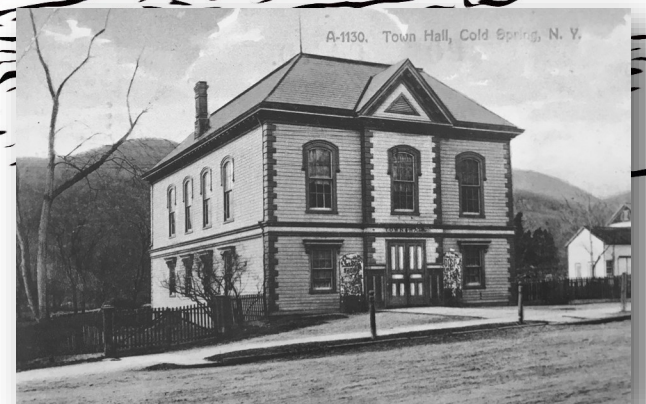


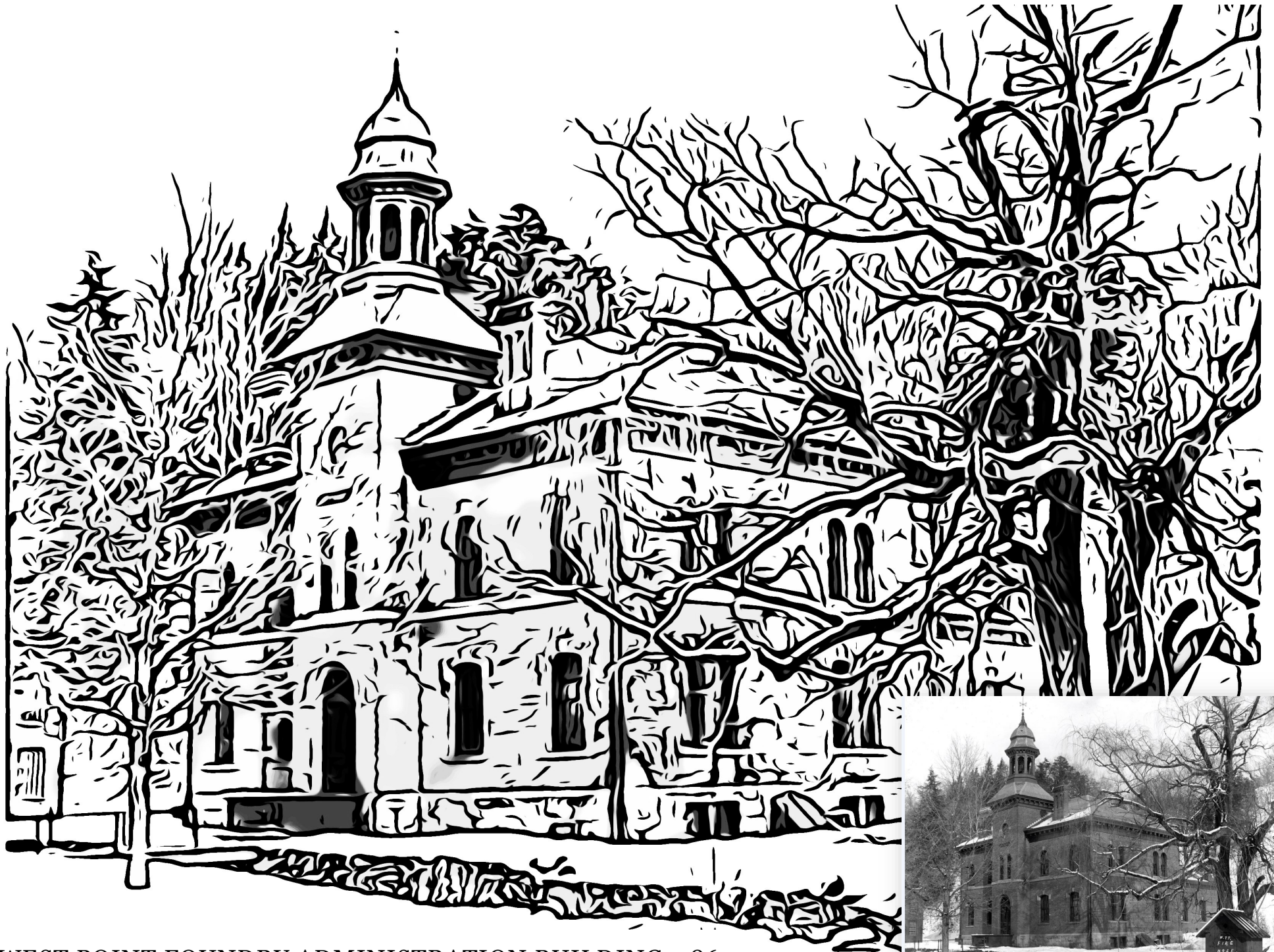
THE GARRISON DEPOT, LATE 1800s.





THE TOWN HALL OF PHILIPSTOWN (BUILT IN 1867).





WEST POINT FOUNDRY ADMINISTRATION BUILDING, 1865.

